



38 Queensway, Preston, PR1 0DS

£1,800

What a stunning property! If you are looking for a modern, detached house in the heart of Higher Penwortham, this is an opportunity not to be missed.

Properties like this one are few and far between. It's not very often you find a modern detached house that has been renovated to such a high standard available to Let. This will make a lovely family home. There is a separate lounge to the front, an open plan family room to the rear with bi-fold doors to the rear garden. A separate Utility room, and a play room or home office. The house features 4 good size bedrooms, a spacious 4 piece bathroom and a large en-suite shower room.

Situated a few minutes walk from Liverpool Road, with plenty of shops and restaurants on your door step.

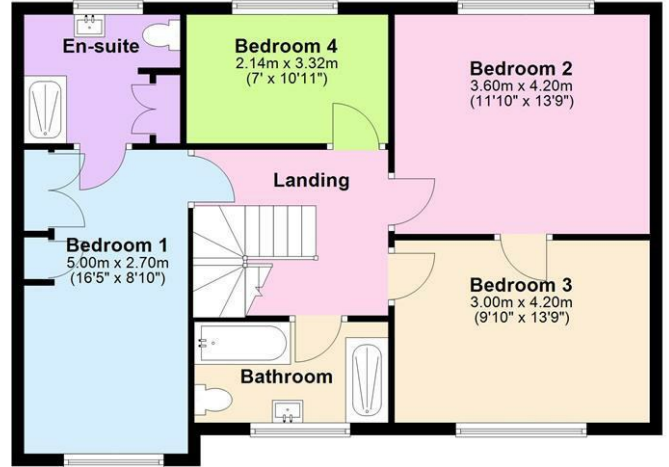
We are looking for a long term tenant and the property is available immediately. If you have any questions or would like to arrange a viewing, please get in touch ASAP.

Floor Plan

Ground Floor



First Floor



Area Map



Energy Efficiency Graph

Energy Efficiency Rating		Current	Potential
Very energy efficient - lower running costs			
(92 plus) A			
(81-91) B			
(69-80) C			
(55-68) D			
(39-54) E			
(21-38) F			
(1-20) G			
Not energy efficient - higher running costs			
England & Wales		EU Directive 2002/91/EC	

Environmental Impact (CO ₂) Rating		Current	Potential
Very environmentally friendly - lower CO ₂ emissions			
(92 plus) A			
(81-91) B			
(69-80) C			
(55-68) D			
(39-54) E			
(21-38) F			
(1-20) G			
Not environmentally friendly - higher CO ₂ emissions			
England & Wales		EU Directive 2002/91/EC	

These particulars, whilst believed to be accurate are set out as a general outline only for guidance and do not constitute any part of an offer or contract. Intending purchasers should not rely on them as statements of representation of fact, but must satisfy themselves by inspection or otherwise as to their accuracy. No person in this firm's employment has the authority to make or give any representation or warranty in respect of the property.